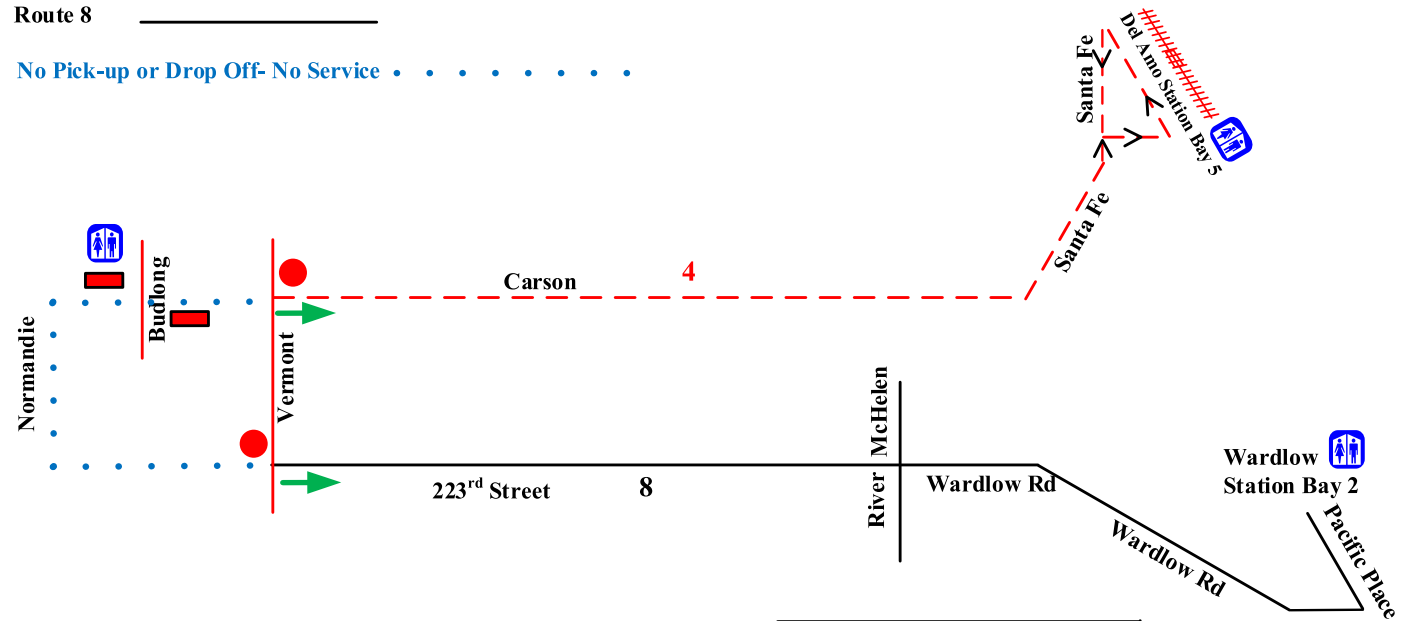




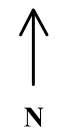
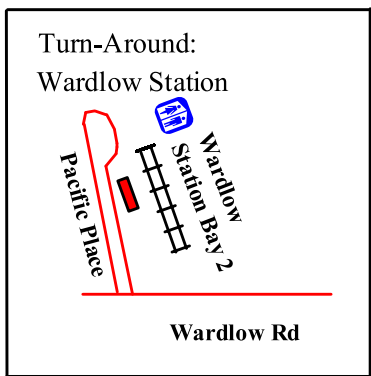


4 Series

- Route 4 
- Route 8 
- No Pick-up or Drop Off- No Service 



-  Recovery Location
-  Comfort Zone
-  End of Route
-  Start of Route



Not To Scale

Route 4

Turn Sheet for Route 4 (Monday – Saturday)

Inbound	Outbound
<p>From Recovery Location Del Amo Station at Bay 5 continue Left Turn Santa Fe Right Turn Carson</p> <p>*Drop off all customers at Stop # 2071 – Carson at Vermont Northeast Corner Deadhead to Recovery Location</p> <p>To Recovery Location Just Past Budlong</p> <p>(Headsign Change Location- Del Amo Station)</p> <p>*Going Westbound: Display ‘Not In Service’ on Headsign immediately arriving at Vermont westbound</p>	<p>From Recovery Location Carson at Budlong - Deadhead to first pick up at Stop 2062 at Carson and Vermont Southeast Corner - continue East on Carson Left Turn Santa Fe Right Turn into Del Amo Station Bay 5</p> <p>(Headsign Location)</p> <p>*Going Eastbound: Change Headsign to ‘In Service’ immediately upon arriving at Vermont eastbound</p>

**Note: Turn Sheets Do Not Over Rule Running Board Sheets.
Operators Have An Individual Responsibility To Read And
Understand Each Running Board Sheet And Follow Any Instruction
Accordingly.... (Revised 10/4/2021)**